

AXLE WORKSHEET



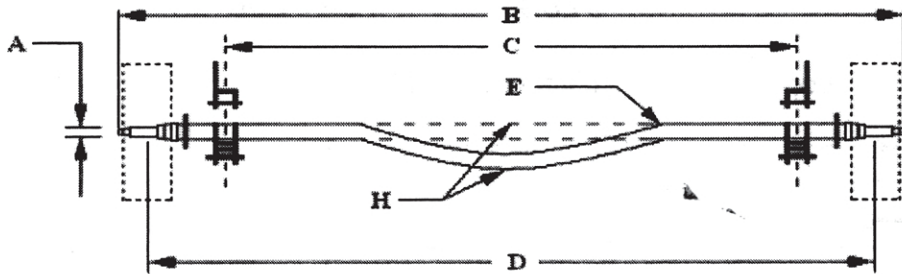
Questions: 941-358-1117

Fax: 941-358-1078

NAME OF COMPANY: _____
 COMPANY ADDRESS: _____
 TELEPHONE NUMBER: _____

**THE ANSWERS TO THE FOLLOWING QUESTIONS WILL
 PROVIDE THE INFORMATION WE NEED TO BUILD YOUR AXLE**

IS THIS AXLE FOR A MAGIC TILT TRAILER? YES OR NO _____
 IF SO: TRAILER MODEL NO. _____ VIN NO.: _____
 AXLE QTY: _____



- A.) SPINDLE SIZE (OUTER AND INNER BEARING NUMBERS).
 CHOOSE ONE: 1 1/16" X 1 1/16" OR 1 1/16" X 1 3/8" OR 1 1/4" X 1 3/4"
 STANDARD SPINDLE OR POSI-LUBE SPINDLE _____
- B.) OVERALL LENGTH. _____
- C.) LEAF SPRING CENTER TO LEAF SPRING CENTER. _____
- D.) HUB FACE TO HUB FACE/CENTER OF TREAD TO CENTER OF TREAD. _____
- E.) MATERIAL USED TO BUILD AXLE CHOOSE ONE: 1 1/2" X 1 1/2" or 2" X 2" or 2" X 3" _____
- F.) WHETHER THE SPRING SITS ON TOP OF OR UNDER THE AXLE. (PICTURED BELOW) _____



- G.) STRAIGHT OR BENT AXLE TUBING. _____
- H.) HUB STYLE.
 NO HUBS _____ DISC BRAKES _____
 LIGHT DUTY _____ DRUM BRAKES _____
 HEAVY DUTY _____
- I.) LUG PATTERN
 4 LUG _____
 5 LUG _____
 6 LUG _____
 8 LUG _____

BEARING PROTECTORS OR DUST CAPS _____

DISCLAIMER: Custom manufactured axles, defined as axles for non Magic Tilt trailers, are built to customers' specifications as detailed on this worksheet. Custom axles are neither returnable nor refundable when accurately built to customer's specifications.

CAUTION: Magic Tilt axle and brake components may not be compatible with other trailer manufacturers' axle and brake components. Please ask your Magic Tilt sales representative about potential incompatibility issues prior to placing an order. Magic Tilt will not be responsible for any axle or brake component compatibility problems with components from another manufacturer.